

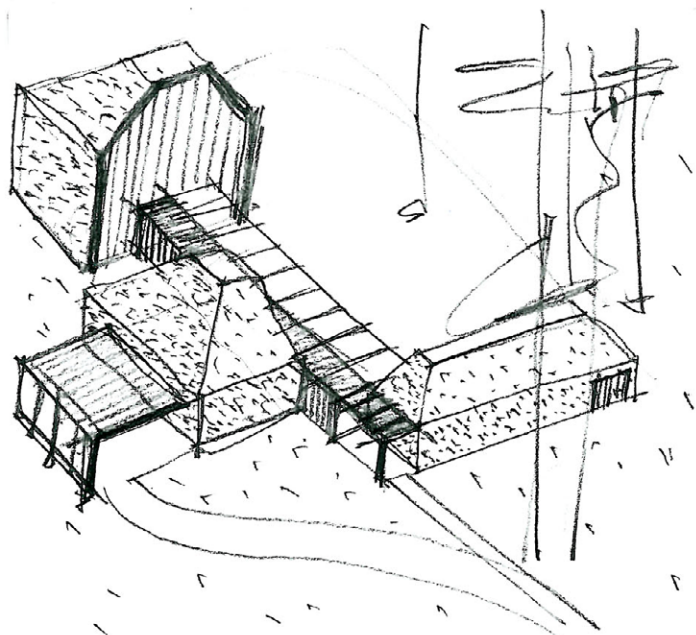
GRANDFATHER'S HOUSE

Vilnius, Lithuania, 2015

Creative industries centre is at Valakampiai next to a river. Built on the site of a shop beside a former bus terminus, the leisure environment and the mystery of creativity were the main inspirations. The wood finish makes the building dissolve visually into the pine forest, and the only break in the facade allows visitors to look at the artists' world as if through a keyhole. The ground floor has a hall, a library and offices. The basement features a space for computer art workshops. Artists' studios on the second floor surround the main axis of the building. There are two types: with an outdoor terrace, and with a mezzanine inside. The second-floor corridor opens on to a meadow. The ceilings of the basement and the first floor are made from 12-metre-long prefabricated reinforced concrete panels. The second-floor supporting construction is a steel profile framework. Heat-treated pine boards are used for the cladding, and bleached pine panelling for the interiors.

Name	Grandfather's House
Purpose	Residential
Location	Rukeliškių str., Vilnius
Area	525 m ²
Sketch	2015
Architects	Audrius Ambrasas, Jonas Motiejūnas

GRANDFATHER'S HOUSE
Vilnius, Lithuania, 2015



SENELIO NAMAS 2015 0101

